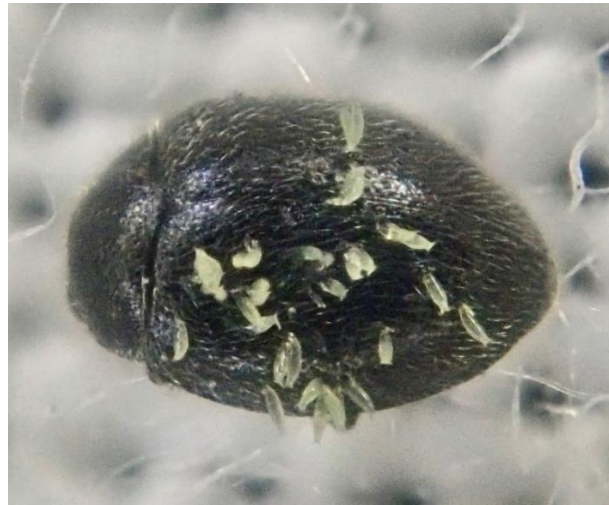
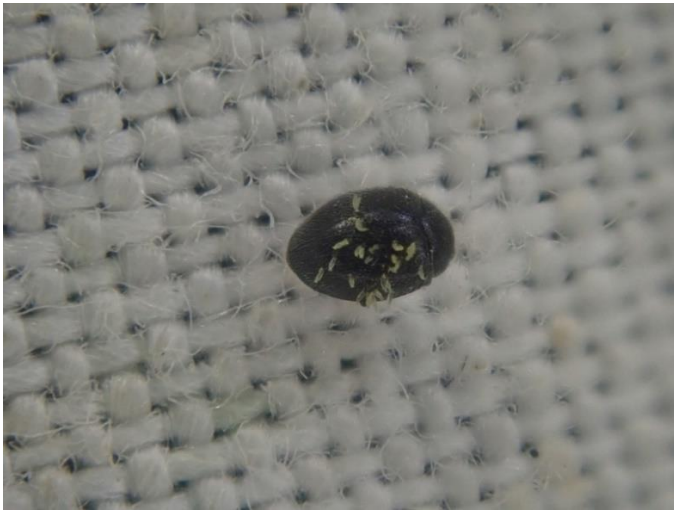
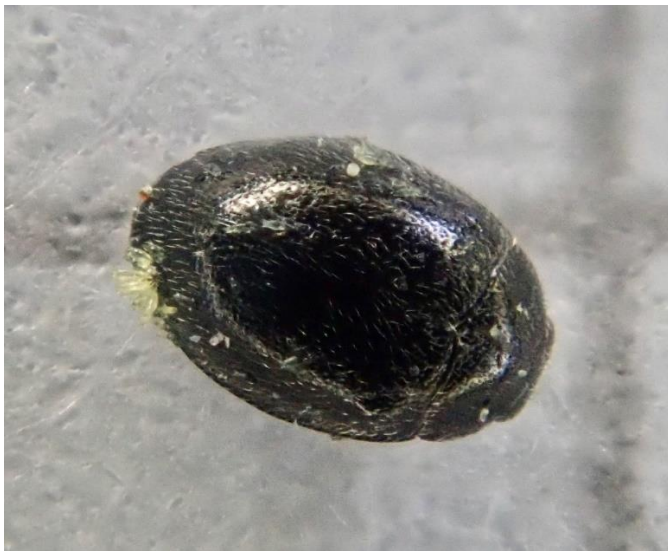


Stethorus pusillus (Herbst, 1797) (Coccinellidae) with fungal parasite *Hesperomyces coccinelloides* (Thaxt.) Thaxt. (Laboulbeniaceae)



Stalked thalli of
H.coccinelloides
attached to elytra



Thalli of *H.coccinelloides*
on the abdomen, legs
and edge of elytra