

*Odynerus*  
*spinipes*

Linnaeus 1758

---

Sue Taylor

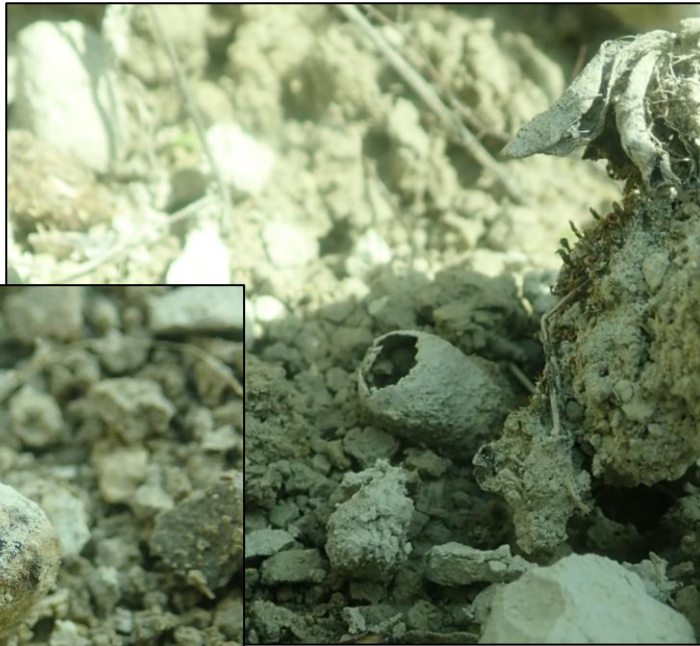
College Lake,  
Buckinghamshire



On 7/2/23 I found some small papery cells on the bank shown right,  
There had been erosion so the cells should not have been exposed, I carefully reburied about 10 and took one to rear.

In early April the cell hatched (early) and an *Odynerus spinipes* emerged and was returned to site. *Odynerus melanocephalus* is also found in this location and nests in similar locations with similar cells.

Odynerus cell  
before and after  
hatching



Location of cells